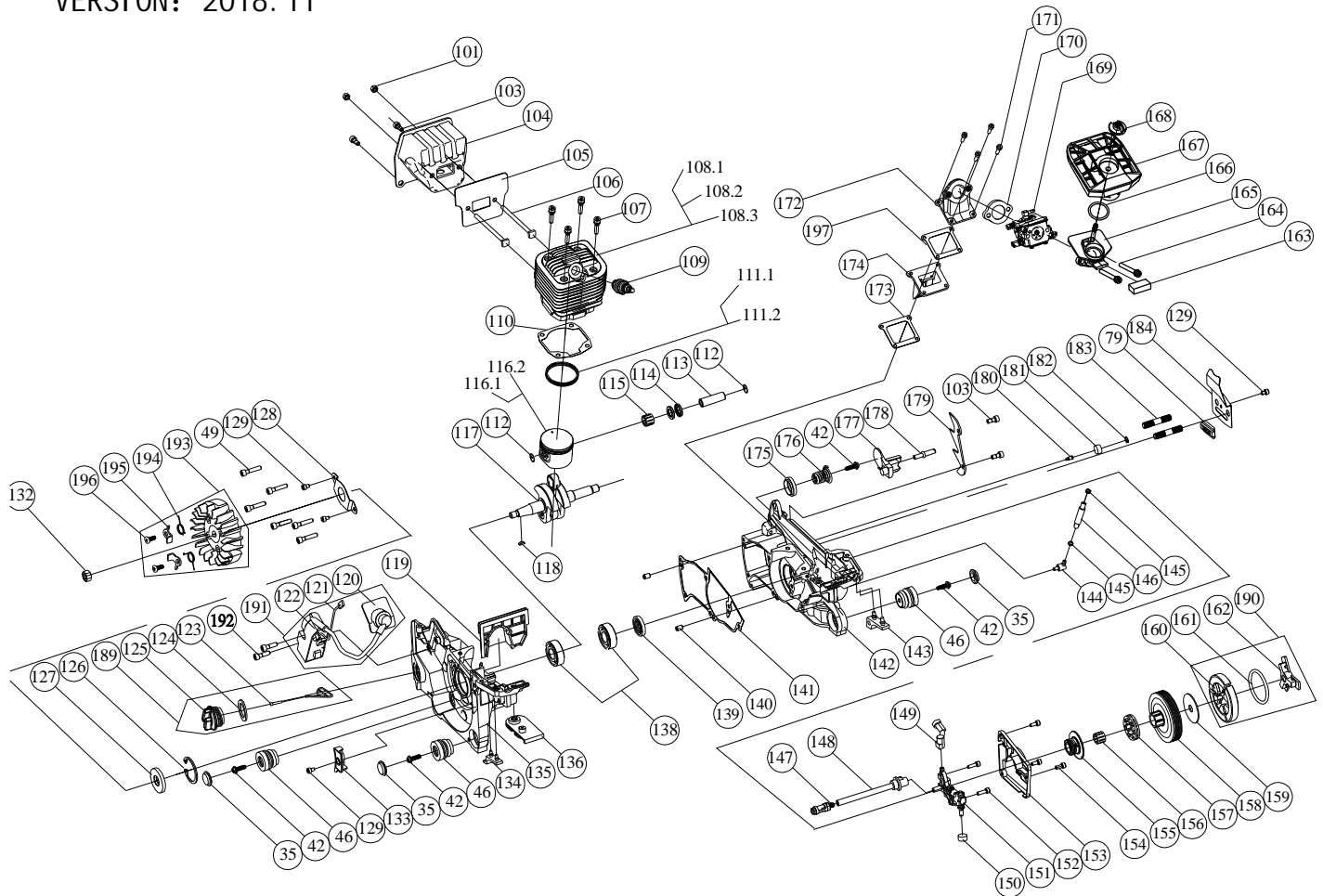


ZMC5201/5601.2 EXPLODED VIEW(EASY START) VERSION: 2018.11



NO.	CODE	DESCRIPTION	QTY.	NO.	CODE	DESCRIPTION	QTY.	NO.	CODE	DESCRIPTION	QTY.
101	5020105001	MUFFLER NUT M5	2					166	5110220201	O RING	1
102	4006003101	SPACER PLATE	1	132	5021008011	NUT	1	167	4005001208	AIR FILTER COMP	1
103	5010605121	M5×12 SCREW	4	133	4005010103	ANTI-DUST SCREEN	1	168	3001032302	AIR FILTER LOCK NUT	1
104	4006001206	MUFFLER	1	134	4013002134	STOPPER (L)	1	169	4017001305	CARBURETOR	1
105	4019003108	GASKET	1	135	4001002108	LEFT CRANKCASE	1	170	4019006105	INSULATION GASKET	1
106	5011605871	M5×87 MUFFLER BOLT	2	136	4018002108	DUST SHIELD	1	171	5011604202	M4×20 SCREW	4
107	5010605301	M5×30 SCREW	4					172	3001022301	CARBURETOR BRACKET	1
108.1	4002001111	5600CYLINDER(φ45.2mm, low-pressure casting)	1	138	5080115351	BALL BEARING 6202	2	173	4005024102	GASKET	1
108.2	4002001119	5201CYLINDER(φ44mm)	1					174	4005025201	NON-RETURN VALVE	1
108.3	4002001126	5601CYLINDER(φ45.2mm, high-pressure casting)	1	139	5090215281	OIL SEAL (R) φ15×φ28×4.5	1	175	3001064103	SPRING SEAT	1
				140	4001005102	STOP PIN	2	176	4013001103	SPRING	1
109	4009004105	SPARK PLUG (L7T)	1	141	4019001106	CRANKCASE GASKET	1	177	3001064104	CHAIN CATCHER	1
110	4019002106	CYLINDER GASKET	1	142	4001004108	RIGHT CRANKCASE	1	178	5011605141	M5×14 SCREW	1
111.1	4004002104	5800PISTON RING(φ45.2mm)	2	143	4013002135	STOPPER (R)	1	179	4000011103	SPIKED BUMPER	1
111.2	4004002117	5201PISTON RING(φ44mm)	2	144	4007006301	TUBE JOINTS	1	180	4014010101	BREATHER VALVE	1
				145	4007005104	CLIP	2	181	4014016101	SPONGE	1
112	4004004104	CIRCLIP	2	146	4007004103	VACUUM PIPE	1	182	4014015101	CIRCLIP	1
113	4004003105	PISTON PIN	1	147	4014002202	OIL FILTER ASS'Y	1	183	5030308261	M8×26 STUD	2
114	4004005101	WASHER	2	148	4014004102	OIL PUMP PIPE (I)	1	184	4014008101	OIL GUIDE PLATE	1
115	5080911151	K11×15×12.5 NEEDLE BEARING	1	149	4014005102	OIL PUMP PIPE (O)	1	185	3002000352	EASY STARTER ASS'Y	1
116.1	4004001206	5800PISTON(φ45.2mm)	1	150	4014016102	SEALED SPONGE	1	186	3002000216	CLUTCH COVER ASS'Y	1
116.2	4004001317	5201PISTON(φ44mm)	1	151	4014001202	OIL PUMP ASS'Y	1	187	4011004201	LEVER ASS'Y	1
				152	5010604151	M4×15 SCREW	2	188	3002002402	FUEL TANK CAP ASS'Y	1
117	4003001205	CRANKSHAFT COMP	1	153	4014002301	OIL PUMP COVER	1	189	3002002502	OIL TANK CAP ASS'Y	1
118	5060103101	WOODRUFF KEY 3.0×3.7×10	1	154	5010604101	M4×10 SCREW	3	190	3002001002	CLUTCH COMP	1
119	3001006101	CARBURETOR SPACER	1	155	4014006302	OIL PUMP WORM	1	191	4009002314	IGNITION ASS'Y	1
120	4009007102	SPARK PLUG COVER	1	156	5080812151	K12×15×15 NEEDLE BEARING	1	192	5010705201	M5×20 SCREW	2
121	4009003111	FLAMEOUT CORD	1	157	4010007102	SPROCKET 3/8-7	1	193	4009001206	FLYWHEEL ASS'Y	1
122	4009002302	IGNITOR	1	158	4010004302	CLUTCH DRUM	1	194	5011606001	4600 SPRING	2
123	3001029301	CAP LINK	1	159	4010005102	CLUTCH WASHER	1	195	4012005106	4600 PAWL	2
124	4014009101	OIL TANK CAP GASKET	1	160	4010001102	CLUTCH WEDGE	3	196	4012006106	4600 SHOULDER SCREW	2
125	3001025108	OIL TANK CAP	1	161	4010003102	CLUTCH SPRING	1	197	4005024107	GASKET	1
126	5070235001	φ35 SNAP RING	1	162	4010002102	WEDGE BRACKET	1	198	4019003102	GASKET	1
127	5090215351	φ15×φ35×4.5 OIL SEAL (L)	1	163	4005014101	DAMPER	1				
128	4018008101	OIL SEAL PLATE	1	164	5010705501	M5×50 SCREW	2				
129	5010604061	M4×6 SCREW	4	165	3001035305	AIR INLET CURVING PIPE	1				