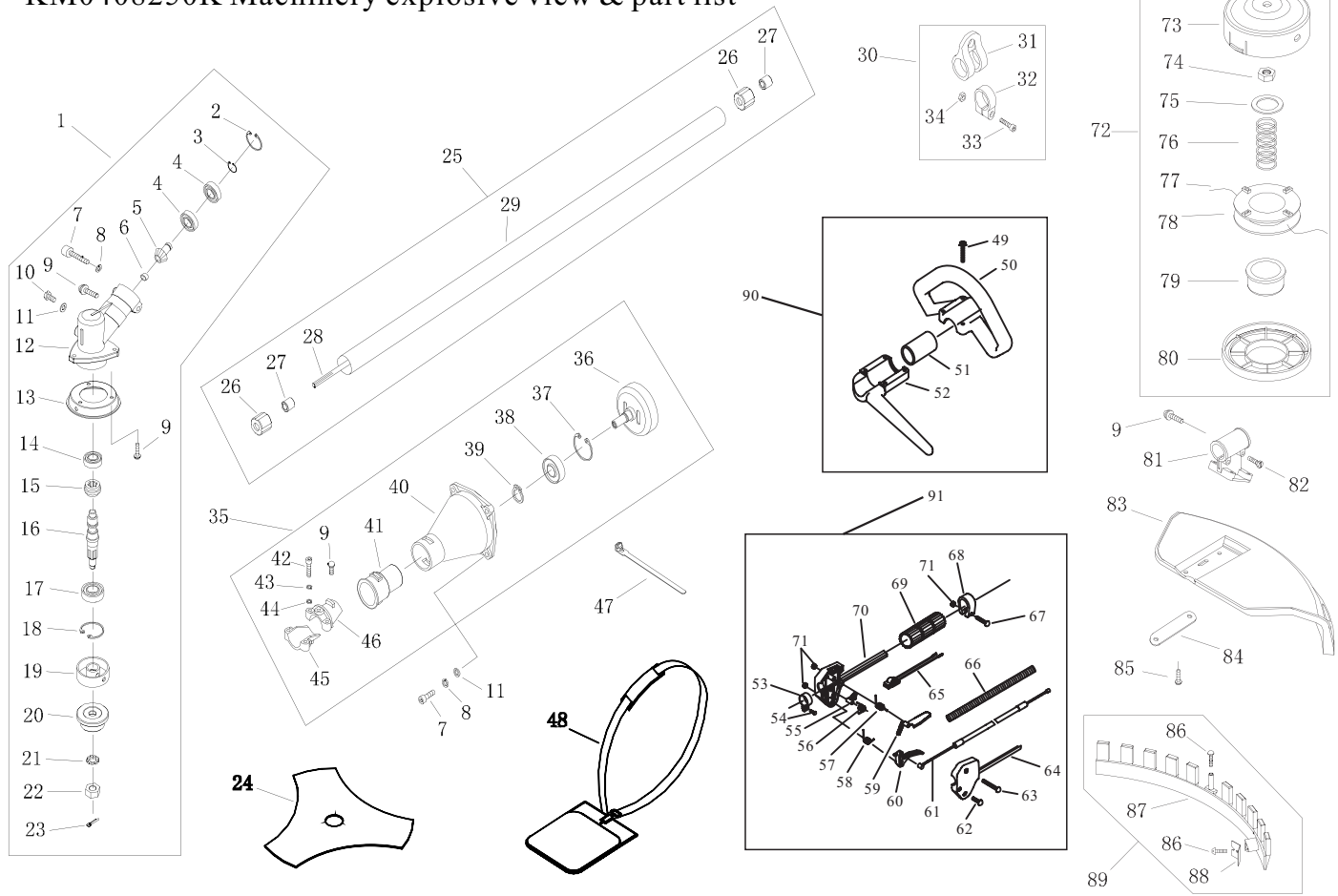


KM0408250K Machinery explosive view & part list



NO.	PART NO.	PART NAME	QTY.	NO.	PART NO.	PART NAME	QTY.	NO.	PART NO.	PART NAME	QTY.
1	CG415.3	Gear Case Ass'y	1	31	CG260.3.1	Harness Clamp	1	61	CG260.2.2C	Cable comp.	1
2	GB/T893.2	Stop Ring 26	1	32	CG260.3-1	Clamp	1	62	GB/T9074.4	Screw M5 X 25	2
3	GB/T894.1	Stop Ring 10	1	33	GB/T70.1	Screw M5×20	1	63	GB/T9074.4	Screw M5 X 35	1
4	GB/T276	Bearing 6000-2RZ/P5	2	34	GB/T889.1	Nut M5	2	64	CG305F.13-3	Box,left	1
5	CG415D.6-4	Pinion	1	35	CG260A.1A	Clutch Comp.	1	65	CG260.2.1	Stop switch	1
6	CG415.3-1	Steel Plate Cap	1	36	CG260A.1A.1	Clutch Drum Comp.	1	66	BG-328A-2	Tube	1
7	GB/T70.1	Screw M6×20	5	37	GB/T893.1	Stop Ring 35	1	67	GB/T9074.4	Screw MT X 25	1
8	GB/T93	Washer 6	5	38	GB/T276	Bearing 6202-2RZ/P5	1	68	CG305F.13-5	Clamp	1
9	GB/T9074.4	Screw M5×12	5	39	GB/T894.1	Stop Ring 15	1	69	CG305F.13-6	Rubber Cover	1
10	GB/T29.2	Bolt M6×12	1	40	CG261.1-1	Linker	1	70	CG305F.13-4	Box,right	1
11	GB/T97.1	Washer 6	5	41	CG305F.14-2	Rubber Cover	1	71	GB/T889.1	Nut M5	3
12	BG305.12.4-4	Gear Case	1	42	GB/T70.1	Screw M5×25	2	72	CG305F.8A	Nylon Cutter Head	1
13	BG305.12.4-9	Blade Cover	1	43	GB/T93	Washer 5	2	73	CG305F.8.1	Case	1
14	GB/T276	Bearing 6000/P5	1	44	GB/T97.1	Washer 5	2	74	CG305F.8-4	Left Nut	1
15	BG-328.9.5-2	Gear	1	45	CG305F.14-3	Clamp B	1	75	CG305F.8-5	Washer	1
16	CG305F.1-1	Gear Shaft	1	46	CG305F.14-4	Clamp A	1	76	CG305F.8-3	Spring	1
17	GB/T276	Bearing 6002-2RZ/P5	1	47	BG415-1	Wire Clamp Band	1	77		Cord(φ2.5×2100)	2
18	GB/T893.2	Stop Ring 32	1	48	CG260.4	Harness Ass'y	1	78	CG305F.8-1	Cord Holder	1
19	BG305.12.4-5	Holder A	1	49	1E40F-5A-CE-4	Screw M5 X 30	4	79	CG305F.8-7	Platen	1
20	CG305F.1-3	Holder B	1	50	CG245Q.11-1	Handle	1	80	CG305F.8-2	Cover	1
21	GB/T862.1	Washer 10	1	51	BG330-CE.1-2	Rubber Cover	1	81	BG430-JCB.1	Bracket	1
22	CG305F.1-4	Left Nut	1	52	CG245Q.11.1	Handle Cover	1	82	GB/T9074.13	Screw M5×30	2
23	GB/T91	PIN 2×16	1	53	CG305F.13.2	Clamp	1	83	CG420.7.1-1	Safety Guard	1
24	CG420-2B	Blade	1	54	GB/T9074.4	Screw MT X 16	1	84	CG330B-6	Washer	2
25	CG415-CE.1	Pipe Comp.	1	55	CG305F.13-10	Tine	1	85	GB/T9074.4	Screw M5×16	4
26	BG-328.9.4-5	Rubber Cover	6	56	CG305F.13-11	Spring	1	86	GB/T845	Screw ST4.2×16	3
27	BG-328.9.4-4	Oil-Bearing	6	57	CG305F.13-9	Spring	1	87	CG420.7.1.1-1	Guard	1
28	CG420.2-3	Drive Shaft	1	58	CG305F.13-1	Spring	1	88	CG420.7.1.1-2A	Blade	1
29	CG415-CE.1-1	Pipe	1	59	CG305F.13-8	Safety lever	1	89	CG420.7.1.1	Guard Ass'y	1
30	CG260.3	Holder Ass'y	1	60	CG305F.13-2	Throttle lever	1	90		Handle Ass'y	1
								91		Lever Ass'y	1